

W9 1378171 0211 A04  
www.schneider-electric.com

| Contents of Toxic or Hazardous Substances or Elements |        |        |                         |            |              |  |   |   |   |   |   |   |
|---|--------|--------|-------------------------|------------|--------------|--|---|---|---|---|---|---|
| 有毒有害物质或元素   |        |        |                         |            |              |  |   |   |   |   |   |   |
| 零件名称 / Part Name<br>(Pb)                              | 镉 (Cd) | 汞 (Hg) | 六价铬 (Cr <sup>6+</sup> ) | 多溴联苯 (PBB) | 多溴二苯醚 (PBDE) | 有害物质或元素在零件中的含量均符合 SJ/T11363-2006 标准的要求 |   |   |   |   |   | O |
|   |        |        |                         |            |              | X                                      | O | O | O | O | O |   |
| 金属材料 / Metal Parts                                    |        |        |                         |            |              |  |   |   |   |   |   |   |

O : 表示该有害物质在该零件所有均质材料中的含量均在 SJ/T11363-2006 标准规定的限量要求以下。  
 X : 表示该有害物质至少在该零件的某一均质材料中的含量超出 SJ/T11363-2006 标准规定的限量要求。  
 对销售之目的所有产品, 本表显示: 施耐德电气供应链的电子产品信息可能包含这些物质。注意: 在所有产品中可能会含有未列出的所有零件。  
 Note: The products on sale may or may not contain all the parts/components listed here.

**⚠️ DANGER / 危险**

**HAZARD OF ELECTRIC SHOCK, EXPLOSION, OR ARC FLASH**  
Disconnect all power before servicing equipment.  
**Failure to follow these instructions will result in death or serious injury.**

可能有触电、爆炸或电弧灼伤危险  
在此电力设备上进行操作时, 请先断开所有电源。  
不遵循上述规定将可能导致人员伤亡。

---

**⚠️ WARNING / 警告**

**RISK OF FIRE OR ELECTRIC SHOCK (FOR DEVICE WITH UL HI-FAULT SHORT CIRCUIT CURRENT RATINGS ONLY)**  
The opening of the branch-circuit protective device may be an indication that a fault current has been interrupted.  
To reduce the risk of fire or electric shock, current-carrying parts and the other components of the controller should be examined and replaced if damaged.  
**Failure to follow these instructions can result in death, serious injury, or equipment damage.**

可能有火灾或者触电的危险 (仅限UL高故障短路电流额定值的接触器)。  
支路保护设备断开, 表明故障电流已被中断。为降低火灾或触电风险, 应检查带电部件和其他控制元件, 如有损坏, 需及时更换。  
不遵循上述规定将可能导致人员伤亡或设备损坏。

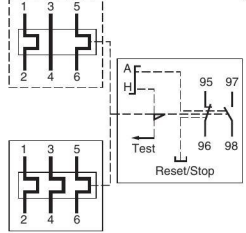
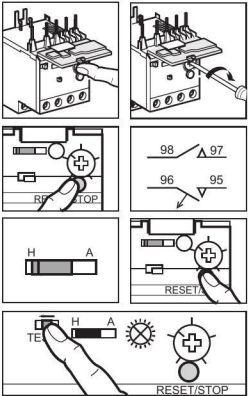


Setting the relay / Réglage du relais  
Einstellung des Relais / Ajuste del relé  
Regolazione dei relais / Regulação do relé  
设置继电器

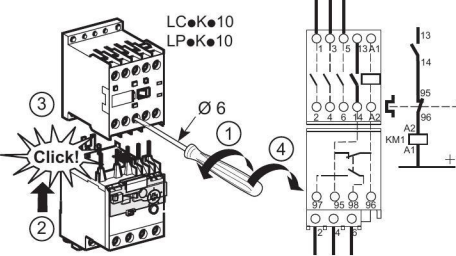
Stop function / Arrêt  
Stop Funktion / Función de parada  
Stop / Paragem  
停止功能

Manual reset / Réarmement manuel  
Hand Reset / Rearmamento manual  
Ricarica manuale / Rearme manual  
手动复位

Test function / Fonction test  
Test Funktion / Función test  
Test funzioni / Teste função  
测试功能

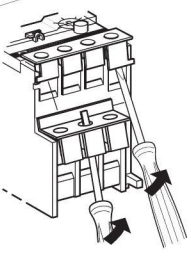
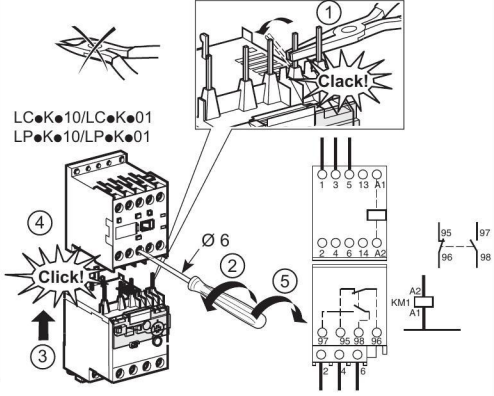


With self-maintaining / Avec auto-maintien  
Mit Selbsthaltungsfunktion / Con mantenimiento automático  
Con automantenimento / Com auto-manutenção



Schneider Electric Industries SAS  
35, rue Joseph Monier  
92506 Reuil Malmaison  
France

Without self-maintaining / Sans auto-maintien  
Ohne Selbsthaltungsfunktion / Sin mantenimiento automático  
Senza automantenimento / Sem auto-manutenção



| Philips No. 2      |                    |                    |                    |                    |                    |  | Ø 6     |        |        |  |
|--------------------|--------------------|--------------------|--------------------|--------------------|--------------------|--|---------|--------|--------|--|
|                    |                    |                    |                    |                    |                    |  |         |        |        |  |
| [mm <sup>2</sup> ] | [mm <sup>2</sup> ] | [mm <sup>2</sup> ] | [mm <sup>2</sup> ] | [mm <sup>2</sup> ] | [mm <sup>2</sup> ] | [mm]                                       | C [N.m] | L [mm] | Ø [mm] |  |
| 0.34               | 0.34...2.5         | 0.75               | 0.75...4           | 1.5                | 1.5...4            | 7  | 0.8     | 7      | 3      |  |
| :                  | 2.5                | 4                  | 0.75...4           | 4                  | 1.5...4            |  |         |        |        |  |
| Torque : 7 lb.in   |                    |                    |                    |                    |                    | AWG : 1 x 18 min.<br>2 x 14 or 1 x 12 max. |         |        |        |  |

